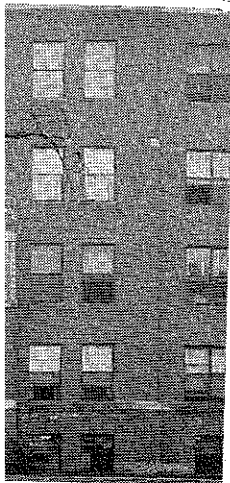


odist



NG
SET

-6921

PRAYER OF
G THE HOS-
RIST IN THE

Your Will

uperintendent

8

The MINUTES

Including THE OFFICIAL JOURNAL *of the*

DETROIT ANNUAL CONFERENCE

of the

METHODIST CHURCH

FIFTH SESSION *held in the*

St. Mark's Methodist
Church

DETROIT, MICHIGAN

June 16-20

1943

BISHOP RAYMOND J. WADE, D.D., LL.D., *President*

A. STANLEY STONE, *Secretary*

VOLUME 1

No. 5

PART VII.—MEMOIRS

TRIBUTE TO DR. M. S. RICE

Bishop Raymond J. Wade

Merton S. Rice was more than a man; he was a whole institution. The Metropolitan Church was referred to as "Dr. Rice's Church". Others, both ministers and laymen, helped admirably but he was constantly the dominating figure.

In a very real sense he belonged to the entire church and world. No man in the connection in all probability had so many outside calls and was able to respond to so many. His name was the best known overseas of any pastor.

We are apt to say in connection with his passing that an era has gone. I doubt it. It need not be so. He lives. He lives in the uncounted thousands who were led to Christ and inspired by his ministry and preaching at home and abroad. He lived on that Friday night only 24 hours after his passing when 65 men of Metropolitan went out on pre-arranged house-to-house personal visitation and won others to Dr. Rice's Church and Christ. He does live on and we may follow in His train if we are willing to pay the price.

DeWitt C. 1875, and died was united in dren, Maurice were Mark H. survive him.

Brother L. distinguished continued his edu with the S.T.B.

Apart from Master in the Jefferson Avertral (Flint), an but uncertain

Physical sness and conv him speak did heeded his me

Brother I brethren in th strong handcl He will be mi preachers. Fir D. C. Littlejoh below. From t follow after hi in his conquest begun by him a

Laymen fr several denomi words of appre Ames Church was conducted so long. The s nasium was ope pay their respe

Rev. Cliffor the Saginaw M pastor at Ames pastor of Ames Oakwood.

Six membe fications, of wh

sisted by Dr. Sidney D. Eva, District Superintendent; Rev. Arthur D. Klontz, and Rev. Henry Borneman. Burial was made in Grand Lawn Cemetery, Detroit.

—Gordon M. Wood.

MERTON S. RICE



For so many years the caption "M. S. Rice—Preacher" has held such a conspicuous place in the religious life of Detroit it has seemed to us to be as permanent as the church in which he preached. It would be commonplace to say anywhere in Methodism that he was one of the great preachers of our generation. That is generally accepted but it is our peculiar privilege in this Conference to say that he belonged to us and we belonged to him. He loved this Conference and came to its sessions religiously and is absent today after thirty years of unbroken attendance only because of his last great appointment made by the Bishop of our Souls a few weeks ago.

Many of us remember the sermon he preached at the Port Huron Conference of 1915 on "Job, the Righteous Man." We can see him now in the strength of his manhood as at the climax he described Job standing like Plymouth Rock through the storms, unmoved and immovable. His description of Job in that earlier Conference was a description of what he himself came to be through the succeeding years. Like Markham's Lincoln "He held his place—Held the long purpose like a growing tree—Held on through blame and faltered not at praise."

As a preacher Doctor Rice was inimitable. Like other human beings ministers of the Gospel are tempted to imitate methods and mannerisms

that seem to be effective with their fellow clergyman. No one could imitate him and any attempt to do so only demonstrated that it could not be done. Nor was he an imitator of others nor the reflection of any school of thought. He would cut across old traditional procedures to declare with all his might what he believed to be the Eternal truth. It seems as if he made a complete dedication of his life to God and God used his native capacities unrestricted by the conventions of time.

His preaching was positively helpful and helpfully positive. He was never guilty of the sin committed by many ministers of lifting more questions than they answer. The editorial comment that he was always "provocative" must have been made by one who rarely heard him preach. That was the one thing he was not. There were some speculative questions upon which he did not major but he always gave his hearers something positive to which they could tie. The statue of "hope" that stands in front of the Metropolitan Church is a tangible evidence of the new spirit he created in men. It may truthfully be said of him as one of the Old Testament "his words kept men on their feet."

There is a real sense in which he was our great evangelist. He was our conspicuous example among great preachers of one who pled with men at every service to give their hearts to God. He continued throughout the years to hold annually evangelistic services for at least two weeks in his own church. Throughout the denomination wherever evangelism was considered his messages were coveted. For a score of years he preached the last two weeks at the Lenten Services conducted by the Detroit Council of Churches. His ministry was dominated by the consuming passion to bring men and women to know Christ and Him crucified.

The caption "M. S. Rice—Preacher" at last has been taken down. To some of us it had seemed that it would stand forever. In our hearts he still has even a more exalted place than when he was with us in the flesh. When the life of the minister seems difficult and the going grows hard we think of him and our "hearts are brave again, and arms are strong. Alleluia! Alleluia!"

—Marshall R. Reed.

JOHN DINGLE

Funeral services for Rev. John Dingle, pastor of the Au Gres Methodist Church, were held at Au Gres on April 12. Dr. William C. S. Pellowe, district superintendent of the Saginaw District, had charge of the service and was assisted by Rev. Elwyn C. Stringer of East Tawas. Pallbearers were fellow-pastors of the Central sub-district—C. S. Brown, William Young, John B. Silas, R. L. McCleary, C. W. Scott and H. E. Davis. Interment was in the cemetery at Oscoda. Death had occurred at the Omer Hospital where he had been under treatment for about two weeks.

John Dingle came to this country from Cornwall, England, at the age of eighteen. He worked in the mines around Calumet for twenty years, a large part of the time as a mine captain. While in Calumet he was converted at a week-night prayer meeting, joined the church and soon after was granted a Local Preacher's license. When health failed he came to the Lower Peninsula and engaged in farming near Glennie for about ten years. Then Dr.

PHILLIPS, CHARLES GORDON—(T., Mich., 1919; F., —). 1919 Sherwood; 1920 in School; 1923 Det., Detroit: St. Luke's; 1931 Detroit: Wesley; 1933 Trenton; 1934 Dearborn: First; *1939 Dearborn: First; 1942 Supt. Port Huron Dist., 1307 22nd St., Port Huron.

PLUEDDEMANN, PAUL W.—(T., Cent. German, 1907; F., 1909). 1907 Monroe field Circuit, Ohio; 1909 Clarington Circuit, Ohio; 1914 Galion Circuit, Ohio; 1920 Huntingburg, Indiana; 1921 Edgerton Circuit, Ohio; 1923 Pigeon, Mich.; 1929 Detroit: Immanuel; 1930 Akron, Ohio: Trinity; 1933 Det., Bay City: Van Buren; 1937 Bay City: Woodside and Auburn; *1939 Bay City: Woodside and Auburn; P. O. 1306 N. McLellen, Bay City.

POLGLASE, ALFRED J.—(M. P., 1884). 1884 Adin and Fall River; 1885 Colo.; 1885 Missionary in Nevada; 1890 Det.; 1890 Dollar Bay; 1892 Champion; 1896 Opechee; 1898 Withdrawn; 1898 C., West Michigan, M. P.; 1898 Laurium; 1905 Mich., M. P., Laurium; 1919 in charge of 4th Dist.; 1925 Supernumerary; 1927 Loaned to U. P. Book and Tract Soc.; *1939 Det., U. P. Book and Tract Soc.; 1941 Retired.

POOLE, F. G.—(C., Rock Riv., 1923). 1924 Det.; 1924 Detroit: Central (Asst.); 1928 Conf. Dir. Religious Edu.; *1939 Conf. Dir. Rel. Edu.; 1940 Executive Secy. Conference Bd. of Education, 1205 Kaies Bldg., Detroit.

POWELL, R. C.—(M. P., 1896). 1896 in School; 1897 Left in hands of President; 1902 Wells; 1904 N. Adrian; 1905 Goodells; 1907 Dimondale; 1908 Charlotte; 1912 Birch Run; 1914 Goodland; 1916 Marlette; 1919 N. Adrian; 1921 Britton; 1923 Evangelist at large; 1924 Riley and Berlin; 1926 Evangelist at large; 1927 Discoo; 1932 Detroit: Harger Memorial; 1933 Retired, *1939 Det., Washington, Mich.

PRITCHARD, NICHOLAS M.—(T. Det., 1911; F., Mich., 1913). 1911 Detour; 1912 Mich., Ashley; 1913 LeRoy; 1914 Farwell; 1915 Lakeview; 1916 Pentwater; 1917 N. E. Ohio, Dover; 1918 Withdrew at own request; 1919 Readmitted, Det., Davisburg; 1922 Dixboro; 1924 Franklin; 1925 Dundee; 1928 Grass Lake; 1931 Akron; 1934 Montrose; 1938 Holly; *1939 Freeland.

PROUSE, ROMILY—(T., Det., 1906; F., 1908). 1906 Palmer; 1907 Ironwood; Newport; 1912 Trimountain; 1915 Tamarack; 1918 Mohawk; 1920 Deerfield; 1924 Marysville; 1926 Flint: Lakeview; 1929 Williamston; 1930 Clarkston; 1932 Swartz Creek; 1937 Richmond; *1939 Richmond; 1941 Port Huron: Washington Ave., 1410 Poplar St.

PROUT, W. CADMAN—(T., Det., 1940; F., 1942). 1940 In School; 1941 Highland Park: Trinity (Assoc.); 1942 Royal Oak; St. Johns 206 E. Lawrence.

PROUT, WILLIAM GEORGE—(T., Det., 1905; F., 1907). 1905 Champion; 1907 Bessemer; 1909 Hurontown; 1913 Iron River; 1915 Trimountain; 1918 Tamarack; 1920 Mayville; 1924 Deerfield; 1926 Detroit: McCabe; 1931 Morenci; 1934 Munising; *1939 Munising; 1940 Newport.

PROWSE, W. E.—(M. P., 1912). 1912 Wellsville; 1916 Goodland; 1918 Marlette; 1921 Newberg; 1922 Dimondale; 1925 Kinde; 1927 Smith's Creek; 1929 Prairie; 1933 Richfield; 1936 Wellsville; 1939 Disco; 1940 Retired (Supply) Disco, *1939; Det., P. O. Washington, R. F. D., Mich.

PRYOR, THOMAS M.—(T., Det., 1925; F., 1929). 1925 Whitmore Lake; 1927 School; 1930 Montrose; 1931 School; 1932 Newburg; 1933 Detroit: Whitefield; 1937 Royal Oak; First; *1939 Royal Oak; First; 702 So. Washington.

PRYOR, WM. S.—(T., Det., 1927; F., 1931). 1927 St. Ignace; 1931 Bay Port; 1933 Deckerville; *1939 Deckerville; 1941 Richmond.

PUMPHREY, JOHN PAUL—(T., Det., 1925; F., 1927). 1925 School; 1926 Fairgrove; 1927 Saginaw: Epworth; 1929 Freeland; 1934 (Feb.) Marine City; *1939 Marine City, 126 Main St.

PURDY, F. M.—(T., Det., 1913; F., 1915). 1913 Fairgrove; 1916 Corunna; 1918 Clinton; 1921 Dundee; 1923 Weston; 1926 Samaria; 1929 Newburg; 1932 Vernon; 1934 Brown City; 1937 Decker; *1939 Decker; 1942 Lexington.

RAMSDELL, EDWARD T.—(T., Det., 1927; F., 1932). 1927 School; 1932 Capac Federated; 1935 Ypsilanti; 1936 in School; 1937 Professor, School of Religion, Vanderbilt University, Nashville, Tenn.; *1939 Prof., School of Religion, Vanderbilt University.

REED, MARSHALL RUSSELL—(T., Det., 1915; F., 1917). 1915 School; 1917 Gaines; 1918 Onaway; 1919 Redford; 1923 Detroit: Jefferson Ave.; 1928 Ypsilanti; 1934 Detroit: Nardin Park; *1939 Detroit: Nardin Park; 5151 W. Chicago Blvd.

REID, R. REX—(T., Det., 1927; F., 1929). 1927 in School; 1929 Detroit: N. Detroit; 1933 Stephenson; 1937 Hermansville; *1939 Hermansville; 1940 Williamston.

RICE, EARL R.—(T., Det., 1903; F., 1905). 1903 Tipton; 1905 Deerfield; 1910 Detroit: Burns Ave.; 1915 Sec. Per. End. Fund for Conf. Claimants; 1917 Birmingham; 1919 Adrian; 1923 Detroit: Campbell Ave.; 1926 Ferndale: First; 1930 Leave of Absence; 1931 Instructor in Character Training, High Schools; *1939 Inst. Char. Tr. High Schools; 17437 Palmer Ave., Melvindale, Mich.

RICE, M. S.—(T., S. Kan., 1894; F., 1896). 1894 Westphalia; 1896 Fontana; 1897 North Ottawa; 1900 Upper Iowa, West Union; 1903 Iowa City; 1904 N. Minn., Duluth: First; 1913 Det., Detroit: Metropolitan; *1939 Detroit: Metropolitan; 59 Alger Ave.

RICKARD, ATHANASIOS P.—(T., Det., 1923; F., 1925). 1923 Mohawk; 1926 Ishpeming: Salisbury and National Mine; 1927 Whitmore Lake; 1935 Yale: Central; *1939 Yale: Central; 1942 Rochester, 320 Walnut Blvd.

RICHARD, ELI Hillsdale; 1922 Sminaw: Stephens St. Yale; 1933 Flint: Civilian Conservation Chaplain C. C. C. Army, Div. Artill. Camp Picket, Va.

RICHARDS, ROBERT F., 1933). 1933 Franklin; 1933 Sch. Calumer; *1939 Calumer; 23725 Gratiot.

RICHARDS, WM. 1909). 1907 Shabbona Ruby; 1912 Davis; Deckerville; 1920 Calville; 1931 Belleville Retired, 19360 Max Mich.

RITCHIE, CORLE 1923 Ill., M. P., C. Appointment at own to Adrian College; lege; 1941 Det., V. College, Adrian.

RISLEY, C. S.—(T. 1894 Ragsville; 1896 rovia; 1898 Mapleton; Glenwood; 1903 Act; Rapids; 1906 Centerville; Shelby; 1917 Gales; 1921 Det., Ironwood; sea; 1926 Manistique; Deerfield; 1933 Dundee; Webberville.

ROBERTS, JAMES 1922). 1920 Tamarack; Munising; 1935 St. C. 1940 Bad Axe.

ROBINSON, ERN 1921; F., 1923). 1921 Charles; 1923 Owosso; Webberville; 1927 Flint; 1928 Ridgeway; 1929 P. and Trinity; 1931 Det.; Berkley; *1939 Port E. 1941 Ohio: Trinity.

ROBINSON, WILL 1920; F., 1922). 1920 sonville; 1924 Detroit; 1927 Royal Oak; St. Thoburn; 1934 Detroit; ial; 1935 Laingsburg;

RUDIN, THEODO 1900; F., 1902). 1904 Hannibal, Ohio; 1911 New Albany, Ind.; Indiana; 1920 Cincinnati; 1933; *1939; 4347 Normany

RUFUS, W. CARL 1907). 1905 Dryden; Corunna Ave.; 1907 Korea; 1914 Furlough; Korea; 1917 Furlough; of M.; *1939 Prof. U. Blvd., Ann Arbor.